

# "Treble Clef" © 2010 all rights reserved.

By Sherry Pence

This is a copyrighted pattern. It is free for you to use and enjoy to your heart's content.

Please give credit to the author in all instances pertaining to this pattern.

You may not publish or use this pattern for profit in any way.

S =start  
Ch =chain  
R =Ring  
FR =Folded Ring  
^ =sm p at which ring will fold  
+ = join  
p,- =picot  
SS =Switch Shuttles  
CTM=Continuous Thread Method  
Finish Ends = Cut, Tie and Hide Ends

SKILL LEVEL = INTERMEDIATE

2 shuttles, 1 color CTM

(1.5 yards between shuttles)

- R5, ch2RW
- FR5^13 SS
- ch4, r20 SS,
- ch20+(sm p at fold)TW SS
- ch13RW, r7

Finish Ends

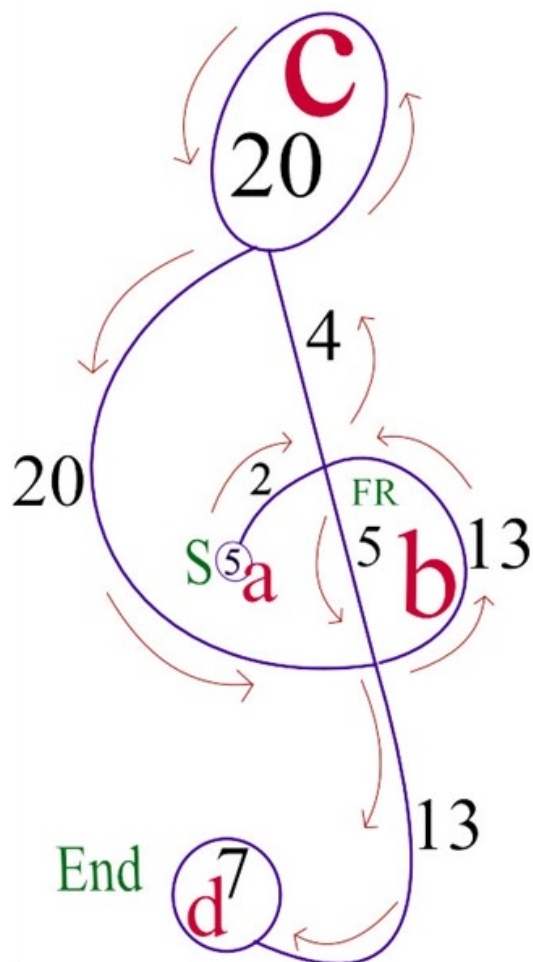
Customer Support: [LadyShuttleMaker@Hotmail.Com](mailto:LadyShuttleMaker@Hotmail.Com)

Blog: [WWW.LadyShuttleMaker.blogspot.com](http://WWW.LadyShuttleMaker.blogspot.com)

Tatting Shop: [WWW.LadyShuttleMaker.Etsy.Com](http://WWW.LadyShuttleMaker.Etsy.Com)

© 2010 all rights reserved by Sherry Pence

When working with folded rings. Leave a very small picot where the section of ring will fold, and then upon closing, hold ring between finger and thumb with folded sections facing the way you want then close ring snugly. Or for Martha Ess's way see: <http://my.att.net/p/s/community.dll?ep=87&subpageid=302674&ck=>



Copyright 2010 Sherry Pence



Copyright 2010 Sherry Pence